

Questions? Visit us at support.waterguru.com



One Year Warranty

For terms and conditions visit: waterguru.com/warranty



Designed in California.
© 2026 WaterGuru, Inc. All rights reserved. SNSEQSG-02
WaterGuru, the WaterGuru logo, and the SENSE logo are trademarks of WaterGuru, Inc.
Amazon, Alexa and all related logos are trademarks of Amazon.com, Inc. or its affiliates.
The Apple logo and Download on the App Store are registered trademarks of Apple Inc.
Google Play and the Google Play logo are trademarks of Google LLC.



QUICK START GUIDE

DOWNLOAD APP

1 WATERGURU APP Follow in-app set up instructions.



Download for iOS or Android

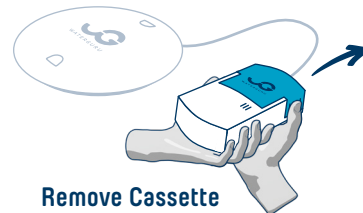
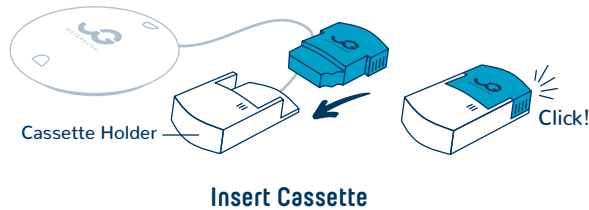


INSTALL / REPLACE CASSETTE

2 INSTALL CASSETTE
Remove fresh Cassette from moisture barrier bag. Fully insert Cassette into Cassette Holder until locking tabs click.

Or

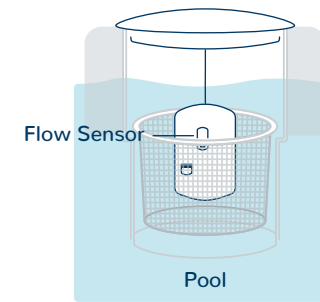
2 REPLACE CASSETTE
Remove used Cassette by squeezing left and right side lock tabs inward and pulling outward away from Cassette Holder. Install new Cassette.



 Cassettes should be stored in clean, non-extreme temperature, dry conditions inside moisture barrier bag until ready for use.

DEPLOY SENSE

3 SENSE INSTALLATION
If your skimmer is square or larger than 9" circular diameter you will need an adapter. Remove existing skimmer cover, and replace with SENSE. If installing SENSE in a spa or above ground pool, you will need a float ring. Get adapters and float rings at waterguru.com/supplies



SENSE in Skimmer
For best water flow, rotate cover so Cassette Holder is closest to pool and Flow Sensor faces pool and is completely submerged.



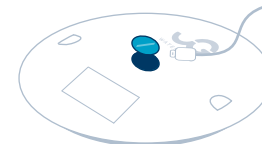
Height Adjustment
If Cassette Holder is touching bottom of skimmer basket loosen cord restraining screws to adjust height of Cassette Holder, then tighten screws.

Before activation, expose the solar panel to bright light. When the light sequence changes to flashing blue, the device is ready to set up.

4 HOW TO CHARGE
SENSE requires direct sunlight to fully charge. If your skimmer is in full or partial shade, you may have to periodically charge SENSE via a USB C Port. Your app will show the charge level.



Unscrew Cap
To charge via the USB Port, use a coin (nickle or quarter) to turn the cap on the top of SENSE to the left 1/4 turn to expose the USB port.



Insert USB charger (USB C charging cable not included)
Do not get water into the USB Port

Charging: Blinking green light
Fully Charged: Solid green light
Low Battery: Blinking red light



Watch SENSE install and charging video.